

Provided By:

Michael Bullis
First Allied Securities, Inc.
333 W. 7th Street
Royal Oak, MI 48067
www.1stalliedsecurities.com
248-584-1400
MI Insurance License #Yes



Securities offered through First Allied Securities, Inc., A Registered Broker Dealer,
Member FINRA/SIPC. An Advanced Equities Company.

All third party materials are the responsibility of their respective authors, creators, and/or owners. First Allied Securities, Inc. is not responsible for third party materials, and the information reflects the opinion of its authors, creators, and/or owners at the time of its issuance, which opinions and information are subject to change at any time without notice and without obligation of notification.

These materials were obtained from sources believed to be reliable and presented in good faith, nevertheless, First Allied Securities, Inc. has not independently verified the information contained therein, and does not guarantee its accuracy or completeness.

The information has no regard to the specific investment objectives, financial situation, or particular needs of any specific recipient, and is intended for informational purposes only and does not constitute a recommendation, or an offer, to buy or sell any securities or related financial instruments, nor is it intended to provide tax, legal or investment advice. We recommend that you procure financial and/or tax advice as to the implications (including tax) of investing in any of the companies mentioned.

At any time First Allied Securities, Inc. and its affiliates (or employees thereof) may have a long or short position, or deal as principal or agent, in relevant securities or provide investment banking services (such as acting as placement agent and/or underwriter), advisory services or other services to the issuer of relevant securities or to a company connected with an issuer, and thus we face an inevitable conflict of interest.

January 2012

Fund Allocator Highlights:

1. **BUYS:** N/A (increased cash)
2. **SELLS:** Industrials, Large cap, International Developed

A Strong Start to 2012

Following a year in which risk assets struggled and volatility spiked to more than twice its long-term average, global equity markets roared back in January posting a 4.48% gain — the strongest January since 1997. Since 1950, when the S&P 500 has a gain for January, the index has finished the year in positive territory 89% of the time, according to Stock Trader's Almanac. Also, in sharp contrast to 2011, January 2012 was remarkable for its lack of volatility, especially on the downside. Last month, the S&P 500's largest daily decline was 0.57%, making it the first January since 1995 without any 1% down days. Since 1936, when January hasn't had any 1% down days, this lack of volatility has been a positive omen, as the S&P 500 has posted positive returns for the rest of the year 83% of the time, with a median gain of 11.4%. However, in these cases, February has realized a median gain of only 0.12% with positive returns 50% of the time.

Asset Class Performance

	Jan.	2012
Emerging Market Equity Index - MSCI Emerging Mkt Index	11.4%	11.4%
Real Estate - DJ-Wilshire REIT	6.4%	6.4%
Developed Foreign Equities - MSCI EAFE Index	5.4%	5.4%
Global Equities - MSCI All World Index	5.1%	5.1%
U.S. Equities - S&P 500 Index	4.5%	4.5%
Commodities - RJ Commodities Price Index	2.8%	2.8%
Bonds - Barclays U.S. Aggregate Bond Index	0.9%	0.9%
U.S. Dollar - DXY Index	(1.1)%	(1.1)%

The Federal Reserve's low interest rate policy (which was recently extended through 2014), better U.S. employment and manufacturing data, plus improved optimism over the Europe's sovereign debt crisis, all helped push U.S. risk assets higher. Performance outside of the U.S. was even stronger. The MSCI Emerging Markets Index gained 11.4% in a month that saw Moody's lift Indonesia's credit rating to investment grade for the first time since the Asian sovereign debt crisis of 1994. Also helping emerging market equities was the lowering of interest rates from the central banks of Brazil (fourth consecutive month), Chile, Israel, Romania, the Philippines and Thailand. Investor concern over a "hard landing" from China's economy also faded in the wake of that country's fourth quarter real GDP growth rate of 8.9% from a year earlier and improvement in its January manufacturing data, both of which were ahead of expectations. Foreign developed markets also had a strong month as the MSCI EAFE Index gained 5.4% due, in part, to strong Japanese manufacturing data and growing complacency about Europe.

Stronger U.S. economic data, but more improvement is needed

The U.S. economy added 243,000 jobs in January, well ahead of expectations for 150,000. The extremely positive U.S. jobs report pushed the unemployment rate down to 8.3%, the lowest rate since February 2009. Weekly initial jobless claims fell to 355,000 last month, the lowest level since early 2008. Initial jobless claims that are below 400,000 and trending lower have been associated with an improving U.S. economy in the wake of the last three recessions. As we have mentioned previously, the global economy will be dependent on continued improvement from the U.S. and emerging market economies since Europe appears to have entered a recession. Despite the strong January jobs report, U.S. payroll growth remains below average for this stage of the recovery, having recouped only 3.2 million of the 8.8 million jobs lost during the last recession.

The U.S. Commerce Department reported that construction spending rose 1.5% in December, its fifth consecutive gain, and existing-home sales grew for their third consecutive month, which dropped housing inventory to its lowest level since March 2005. Inventory of both new and existing homes fell to 6.1 months at the end of December, a level historically associated with a balanced market. Unfortunately, home prices continued to decline as December existing-home prices fell 2.5% vs. December 2010 levels. U.S. manufacturing once again expanded in January as the Institute of Supply Management (ISM) Manufacturing Index rose to 54.1, its 30th consecutive reading above 50 and its highest in seven months (levels above 50 indicate expansion).

While the WSJ Survey of Economists shows consensus expectations call for the U.S. economy to grow 2.3% in 2012 after only 1.7% growth in 2011, how this projected growth will happen remains a question. Some of the concern focuses on the quality of the U.S. economy's fourth quarter GDP growth of 2.8%, when almost two-thirds came from inventory restocking, which may not continue to the same degree in the first half of 2012. Concern has also focused on December's U.S. retail sales which fell 0.3% vs. November and only grew 0.1% on a year-over-year basis. Although holiday sales were strong, consumers appeared to have started their holiday shopping earlier than usual in 2011. Since consumer spending accounts for 70% of the U.S. economy, future reports will be watched closely.

Europe: tenuous times ahead?

Eurozone economic data was mostly discouraging last month. Germany's annualized GDP growth rate fell to 1% during the fourth quarter of 2011, while eurozone unemployment hit a record high of 10.4%. The global economic outlook for 2012 will continue to be influenced by the length and depth of the eurozone's recession. The International Monetary Fund (IMF) recently projected that the global economy will expand 3.3% this year, down from 3.8% in 2011, provided Europe's recession is mild. They said the anticipated mild

recession out of Europe could worsen if eurozone leaders fail to halt the rise of state borrowing costs and the growing squeeze on bank credit. Inaction could cause the Eurozone's economy to shrink 4% in each of the next two years, which would take two percentage points off its global growth outlook.

"The world recovery, which was weak in the first place, is in danger of stalling", said Olivier Blanchard, IMF chief economist. "But there is an even greater danger, namely that the European crisis intensifies. In this case, the world could be plunged into another recession." The IMF is urging eurozone leaders to boost the size of the European debt-crisis firewall, implement pro-growth policies and further integrate the monetary union. If Europe quickly follows these recommendations, the fund projects the region's economy will contract by only 0.5% this year. Under its most optimistic scenario, the IMF expects growth to return to the region next year. Investors will once again have to monitor Europe's sovereign debt crisis in 2012 and pay close attention to its economic statistics. One of the few encouraging data points last month was the expansion of the eurozone's Purchasing Manager Index for the first time in five months, rising 2.1 points in January to a level of 50.4.

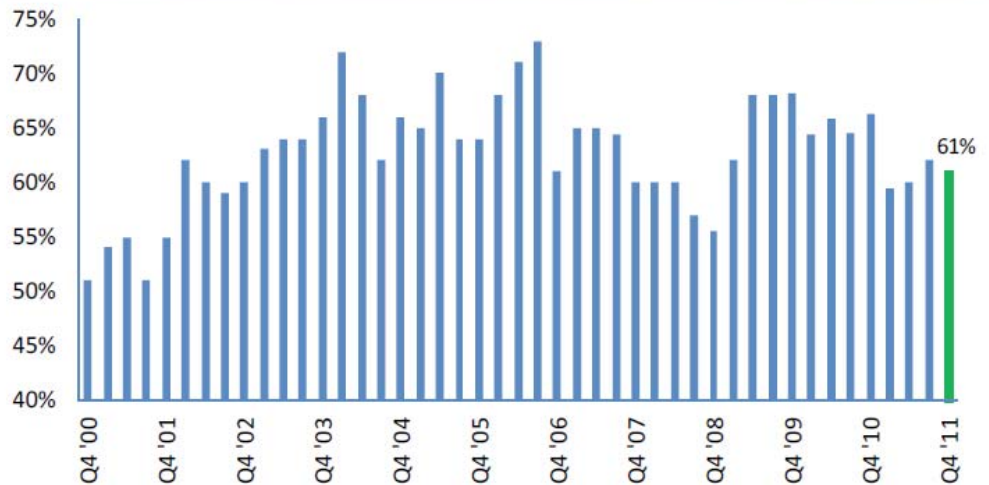
Investors remain focused on Greece's debt restructuring and the potential deal that would force Greek sovereign debt holders to take a 50% haircut on more than €200 billion of debt in exchange for Greek debt being governed under English law. English law would allow creditors to acquire Greek assets in case of default. Germany and France warned that the next Greek bailout payment of €130 billion hinges on the ability of Greece and its creditors to restructure the terms of its debt payments. Greece is scheduled make payments of €14.5 billion to bondholders in March and is at high risk of default if it is unable to secure the next tranche of the bailout.

Fourth-quarter earnings picked up pace

After starting on a rough note, U.S. fourth quarter earnings reports improved toward the end of January. As the first chart shows, 61% of U.S. companies that have reported earnings this season have beaten analyst estimates. This is still below the reading from last quarter,

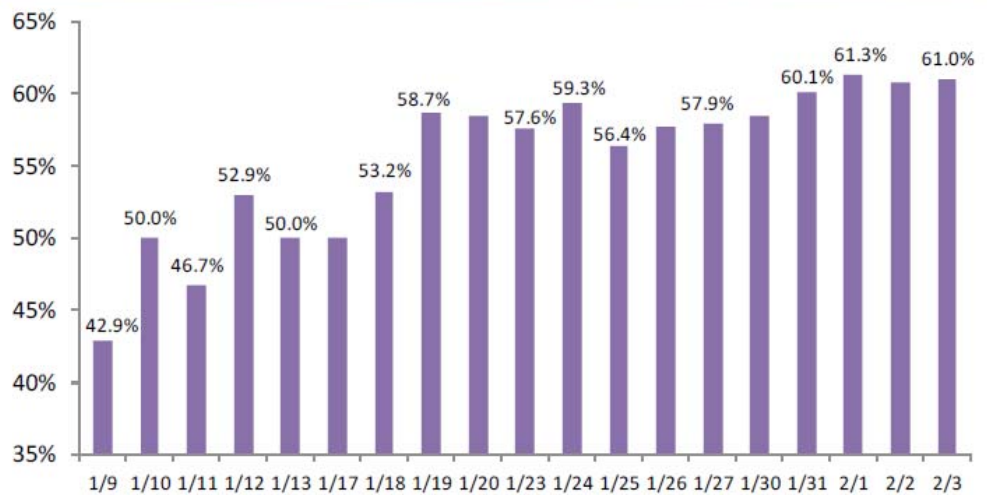
but it is much better than the mid-50s reading reported early in the earnings season, which would have been a multi-year low. The second chart shows the earnings "beat rate" on a daily basis as earnings season has progressed.

% of Companies Beating Earnings Estimates by Quarter: 2000-Present



Source: Bespoke Investment Group

% of Companies Beating Earnings Estimates by Day This Season



Source: Bespoke Investment Group

To get a sense of global equity valuations, we track a number of metrics for the broad MSCI equity indices compared to their 25-year averages. The metrics in the following table are all shown on a yield basis, meaning that a positive number represents undervaluation and a negative number overvaluation. As shown, the MSCI U.S. Index remains undervalued on three of the four metrics, with dividend yield being the exception. However, the U.S. equity market has generally been overvalued for the majority of the past 25 years compared to earlier time periods and our longer-term measures show it moderately above fair value but not yet significantly overvalued. The MSCI World ex. U.S. Index shows a more significant

degree of undervaluation on all four metrics we follow. So, even after January's robust equity market gains, global equities continue to appear reasonably valued. In other words, earnings have caught up to price, so to speak, which may be supportive of higher equity prices worldwide over time.

MSCI Index Valuation (% from 25-Year Rolling Moving Average) a/o 01/31/2012	Earnings Yield	Dividend Yield	Book Yield	Cash Flow Yield
U.S.	30.0	-8.0	22.9	12.4
World ex. U.S.	58.2	52.2	55.4	25.3
EAFE ex. Japan	35.1	27.6	34.9	12.5
Europe Ex. U.K.	42.1	49.2	41.8	6.1
U.K.	27.2	-2.2	31.5	24.7
Japan	114.2	136.2	115.2	64.5
Pacific ex. Japan	27.3	22.6	12.2	15.4

January Fund Allocator Positioning

Fund Allocator accounts jumped right out of the gates in January, posting positive returns as accounts benefited from our positioning regarding U.S. economic resilience and a strong start to the year. Our international exposures boosted performance as positions in emerging markets and Australia were the month's top performers. As concerns over Europe faded somewhat last month, investors re-focused on the emerging economies' stronger fiscal situations and higher growth rates, two of the reasons we favor emerging over developed economies. The weakest equity performance came from our defensive dividend-paying, equity-income holding which was up slightly as investor money flowed into more economically sensitive or cyclical asset categories.

While we were positioned for strength in equity markets, we now believe the risks in Europe are being underestimated and the high level of complacency will likely lead to volatility in the next few months. As a result, we made a number of moves in January to begin to reduce risk and raise cash. In the middle of the month, we sold a tactical position in industrials after a nice gain and run up in the markets. We still believe the U.S. economy will continue to improve, and large industrial companies should benefit from this trend, but cyclicals were first on our exit list as we move toward the 1350-1370 level on the S&P 500, a price level we have identified as potential resistance. We also reduced exposure in large cap U.S. stocks and developed international stocks for the same reasons. We ended the month with above-average cash balances of approximately 8% but will look to re-invest some of this exposure should the market correct its short-term overbought condition and

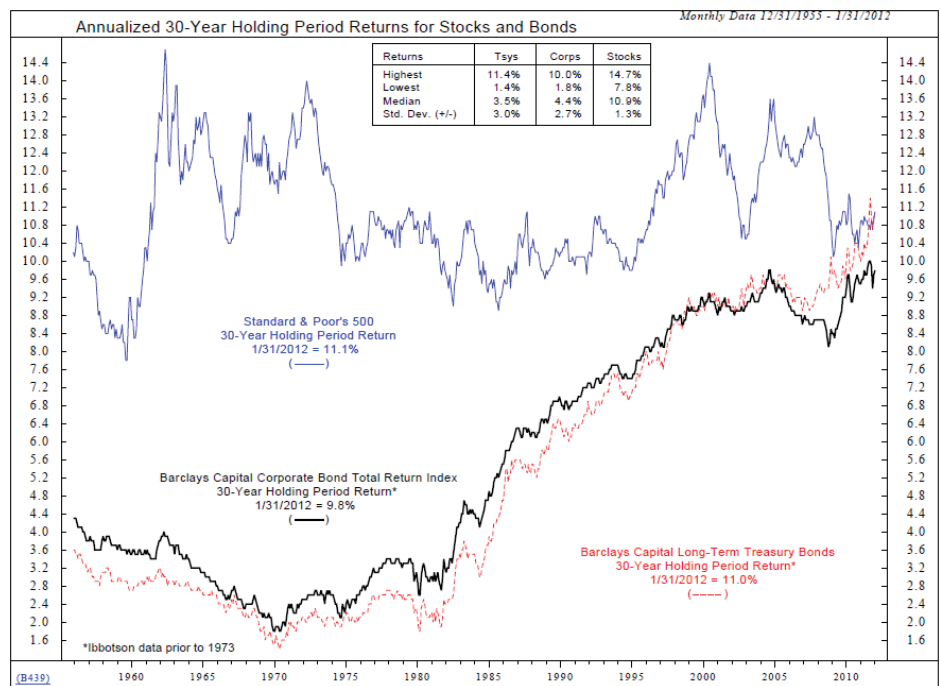
our macro models remain bullish.

Looking forward, technology is high on our radar list. We believe many relatively new technologies such as cloud computing and wireless smart technologies are still in the early stages and have strong growth potential. As the market reaches our target valuations, we will consider making this addition to our portfolios.

Longer-term Outlook:

We will close with a longer-term perspective on stock and bond returns. The accompanying chart shows annualized 30-year holding period returns for U.S. stocks (blue line), U.S. corporate bonds (black line) and U.S. Treasury bonds (red dashed line).

A few observations stand out. First, over any 30-year holding period dating back to 1955, U.S. stock investors have realized positive, nominal returns. As of January 2012, the 30-year holding period return for the S&P 500 was 11.1% which included the dismal decade of the 2000s. Second, U.S. Treasury bonds over the past 30 years have returned 11% and there was even a period last year when their 30-year holding period return exceeded that of the S&P 500 — for the first time since the Civil War! Given the incredible bull market run in U.S. Treasury bonds over the past 30 years (yields peaked at 14.8% in 1981 and fell to 2.5% in 2008), a repeat performance from bonds is unlikely over the next 30 years. Another way of looking at the chart is to see that the S&P 500's 30-year holding period return is currently toward the middle of its 56-year history while 30-year holding period returns from U.S. Treasury bonds is at its maximum, outlier edge, suggesting greater potential for mean reversion.



Source: Ned Davis Research

First Allied Asset Management, Inc.

Craig Columbus, *Strategist*
 Jeff Mindlin, *CFA; Chief Operating Officer*
 Tom Samuelson, *CFA, CMT, Chief Investment Officer*
 Brian Wright, *CFA, Head Trader*

Lon Gerber, *Portfolio Manager*
 Eitan Boral, *Assistant Portfolio Manager*
 Collin Martin, *Investment Consultant*

First Allied Asset Management is a registered investment adviser and wholly owned subsidiary of First Allied Holdings, Inc., which is a holding company conducting financial services business through the following registered entities:

- *First Allied Advisory Services, Inc., a registered investment adviser*
- *First Allied Securities, Inc., a registered investment adviser and broker/dealer. Member: FINRA/SIPC*
- *First Allied Asset Management, Inc., a registered investment adviser*

First Allied Asset Management provides investment management and advisory services to a number of programs sponsored by the above affiliates, including the First Allied Select, Private Client Services, VIP and Elite programs. The First Allied Asset Management individuals that provide investment management and advisory services are not associated persons with any broker/dealer.

Investment adviser representatives of First Allied Advisory Services, Inc. and First Allied Securities, Inc. who are registered representatives offer securities through First Allied Securities, Inc., a registered broker/dealer. Member FINRA/SIPC. Advisory services offered through First Allied Advisory Services, Inc. and First Allied Securities, Inc.

An investor should carefully consider investment objectives, risks, charges and expenses before investing in a mutual fund. This information and more complete information, including potential risks, is included in each mutual fund prospectus, which can be obtained from First Allied Securities, Inc. by calling 800.499.5489. Read prospectus carefully before investing. Investment returns will fluctuate and are subject to market volatility, so that an investor's shares, when redeemed or sold, may be worth more or less than their original cost. Mutual funds may have investment objectives other than matching

a particular market index and are subject to risks similar to those of stocks. There is no certainty that any investment or strategy will be profitable or successful in achieving investment objectives. For current performance information, including performance to the most recent month-end, please contact First Allied Securities, Inc. Mutual Funds may charge fees for management of the fund. These fees will be charged in addition to any fees charged for management by First Allied Asset Management, or its affiliates.

Many asset classes are subject to unique potential risks. Investments in foreign investments may incur greater risks than domestic investments. International investments may involve risk of capital loss from unfavorable fluctuation in currency values, from differences in generally accepted accounting principles or from economic or political instability in other nations. Emerging markets involve heightened risks related to the same factors as well as increased volatility and lower trading volume. Investments in smaller companies typically exhibit higher volatility in addition to the normal risks associated with investing. Narrowly focused investments typically exhibit higher volatility. REIT investments are subject to changes in economic conditions, credit risk and interest rate fluctuations. Bonds and bond funds will decrease in value as interest rates rise. High yield bonds involve additional risks because of the lower credit quality of the securities and are susceptible to a higher level of volatility and increased risk of default. Income from tax-free bonds may be subject to state and local taxation and the Alternative Minimum Tax. Commodities markets have historically been extremely volatile.

All data gathered from sources believed to be reliable. No guarantee is made with respect to accuracy. The index returns reflect the reinvestment of income, dividends, and capital gains, if any, but do not reflect fees, brokerage commissions, or other expenses involved with investing. Investors may not make direct investments into any index.

Nothing in these materials shall be construed as offering or disseminating specific investment, tax, or legal advice to any individual without the benefit of direct and specific consultation with a First Allied Asset Management advisor or any affiliate of First Allied Asset Management. Information contained herein shall not constitute an offer to sell or a solicitation of an offer to buy any securities listed herein. Past performance is not a guarantee of future results.